

Gender Integration in MFF Update for RSC-14 Meeting



28th September 2017



©Siriporn SRIARAM

Harvesting oysters in low tide – Trat province © Siriporn Sriaram, 2016



The MFF Strategic Framework and Action Plan for Gender Integration (2014) [Revised 2016]



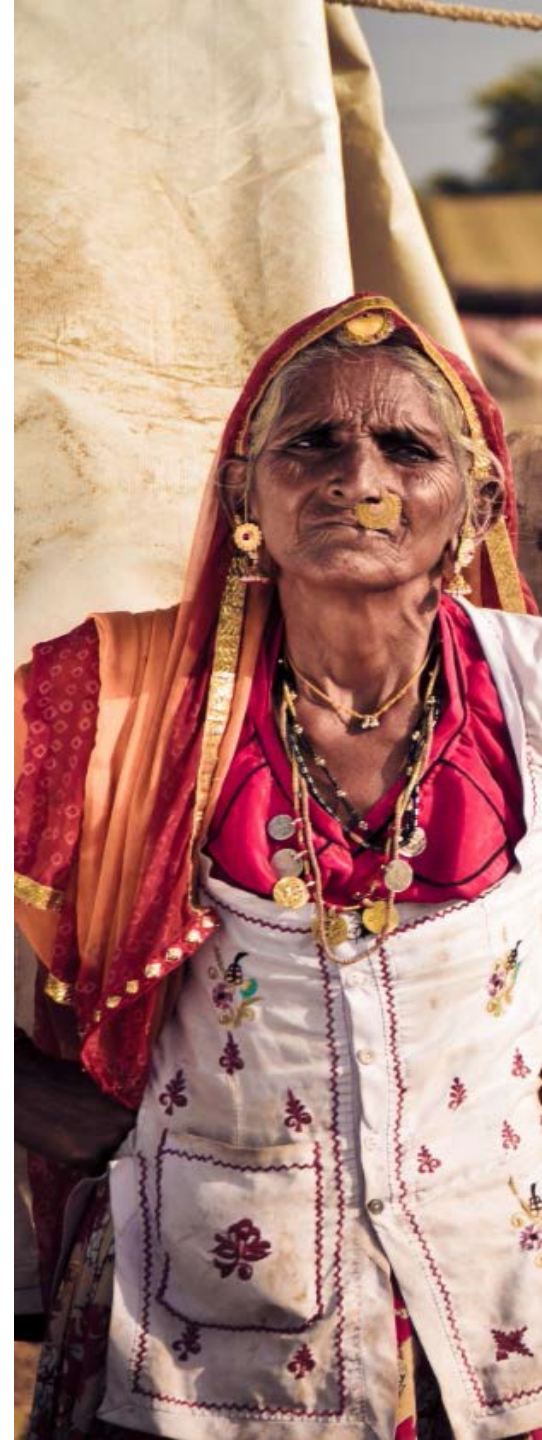
- **Function:** To facilitate **integration of gender equality** in the **design, planning** and **execution** of activities promoted and supported by MFF.
- **Description:** The Framework sets out the MFF **principles and approaches** and explains how **gender integration in MFF** will be **delivered through** the implementation of the **MFF Resilience Framework**.



Update on MFF Gender Strategy (2014) [Revised 2016]

Strategic Interventions:

1. Internal Governance and Institutional Arrangements
2. Programme Planning and Implementation
3. Monitoring, Learning, Evaluation (MLE) and Reporting
4. National Policy and Strategy
5. Global/ Regional Policy
6. Capacity Building, Knowledge Management and Communications



1. Internal Governance & Institutional Arrangements

- **MFF Strategic Framework and Action Plan for Gender Integration (2014):** revised in September 2016.
- **MFF Regional Gender Advisors:** (ongoing) Regional and National Members
- **Gender Roster:** over **170** regional and national experts.
- **Regional and national project proposals:** Integrate gender and provide gender budget. **Gender Action for GCF proposal**
- **Gender Proposal template for countries**
- **MFF 2017 budget allocations for gender integration – Assistant post, Grants for Gender Integration in country programmes**



The MFF Strategic Framework and Action Plan for Gender Integration (2014) (Revised 2016)

Summary

The Mangrove for the Future (MFF) Strategic Framework and Action Plan for Gender Integration has been developed to facilitate integration of gender equality in the design, planning and execution of activities promoted and supported by MFF.

The document sets out the MFF principles and approaches and explains how gender integration in the MFF Programme will be delivered through the implementation of the MFF Resilience Framework thereby creating conditions for equitable access by men and women to project resources and benefits and equitable participation in decision-making processes.

This document provides information on the regional and national strategic interventions and activities for achieving gender equity in the MFF Programme as a whole, including key steps for national / site based programme implementation, and specific Knowledge Management, Communications, and Capacity Development activities.

Introduction

1. About Mangroves for the Future (MFF) Programme

1. Internal Governance & Institutional Arrangements

Gender Special Grants



Country	2016	Status	Location	Project Name	2017	Status	Location	Project Name
Bangladesh	Y	Completed	Bangladesh coast.	Understanding the inter-gender relationships in Bangladesh Coastal Zone	Y	Not started.	Nijhum Dwip.	Understanding the gender dynamics to ensure inclusive governance of Nijhum Dwip Seascape
Cambodia	Y	Ongoing.	Toul Tortueng Commune, Sihanouk Province	Gender Assessment of Coastal Ecosystem Management in Toul Tortueng Commune, Prey Nob Distrcit, Preah Sihanouk Province, Cambodia	-	-	-	-
India	Y	Ongoing.	Odisha.	Mainstreaming gender into Small Grant projects in India	Y	Not started.	Krishna Delta, Andhra Pradesh.	Conducting Gender Analysis for MFF priority geographic sites
Indonesia	Y	Not started.	Situbondo and Probolinggo	Development of Gender Sensitive in Situbondo and Probolinggo	Y	Not started.	Situbondo and Proboling go	Gender Assessment for Entrepreneur Development in Situbondo and Probolinggo

1. Internal Governance & Institutional Arrangements

Gender Special Grants



Country	2016	Status	Location	Project Name	2017	Status	Location	Project Name
Maldives	-	-	-	-	Y	Not started yet	S. Hithadhoo	Conduct gender analysis in S. Hithadhoo
Pakistan	Y	Gwatar Bay	Ongoing	Gender Analysis, Gwatar Bay (joint proposal with special study)	Y	Not started yet	Keti Bundar	Conducting Gender Analysis for MFF priority geographic sites
Sri Lanka	Y	Ongoing	Kokkilai Lagoon	A Pilot Study in the Kokkilai lagoon area. Development and testing of an up-scalable Gender Assessment tool at the Kokkilai Lagoon in the Northern Province of Sri Lanka	Y	Under Review	Hikkaduwa Marine National Park	Resilience based multi-stakeholder approach for Hikkaduwa Marine National Park
Thailand	-	-	-	-	Y	Not started yet	Trat	Conducting Gender Analysis for MFF priority geographic sites

2. Programme Planning and Implementation

Gender integration into the key stages of the MFF SGF planning cycle



1. Gender Analysis (GA) incorporated as part of Resilience Assessment (RA)
2. The GA informs the Call for SGF proposals
3. Selection of gender responsive projects.
4. PCM trainings include Gender Integrated Planning for gender responsive project design.
5. The MLE framework integrates gender indicators

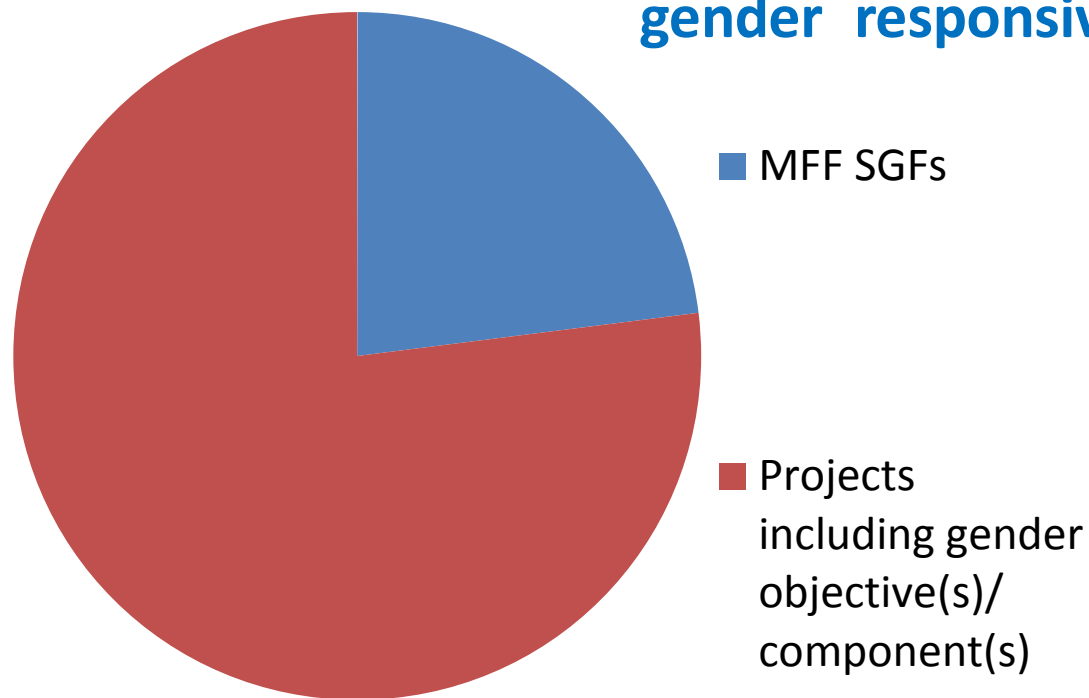
Effective Gender approaches address more than 'needs' they **address power imbalances and inequality** in access to decision making opportunities



Gender integration in SGF Projects Phase 3



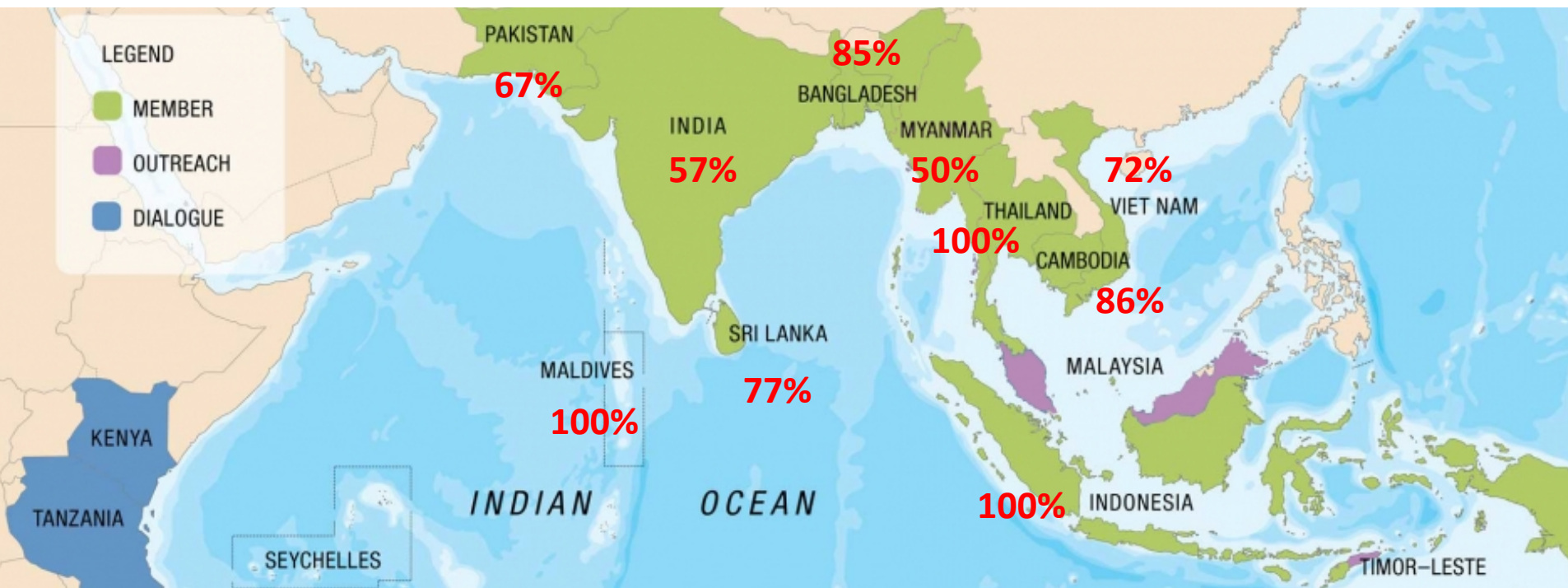
77% of all SGF Projects
gender responsive



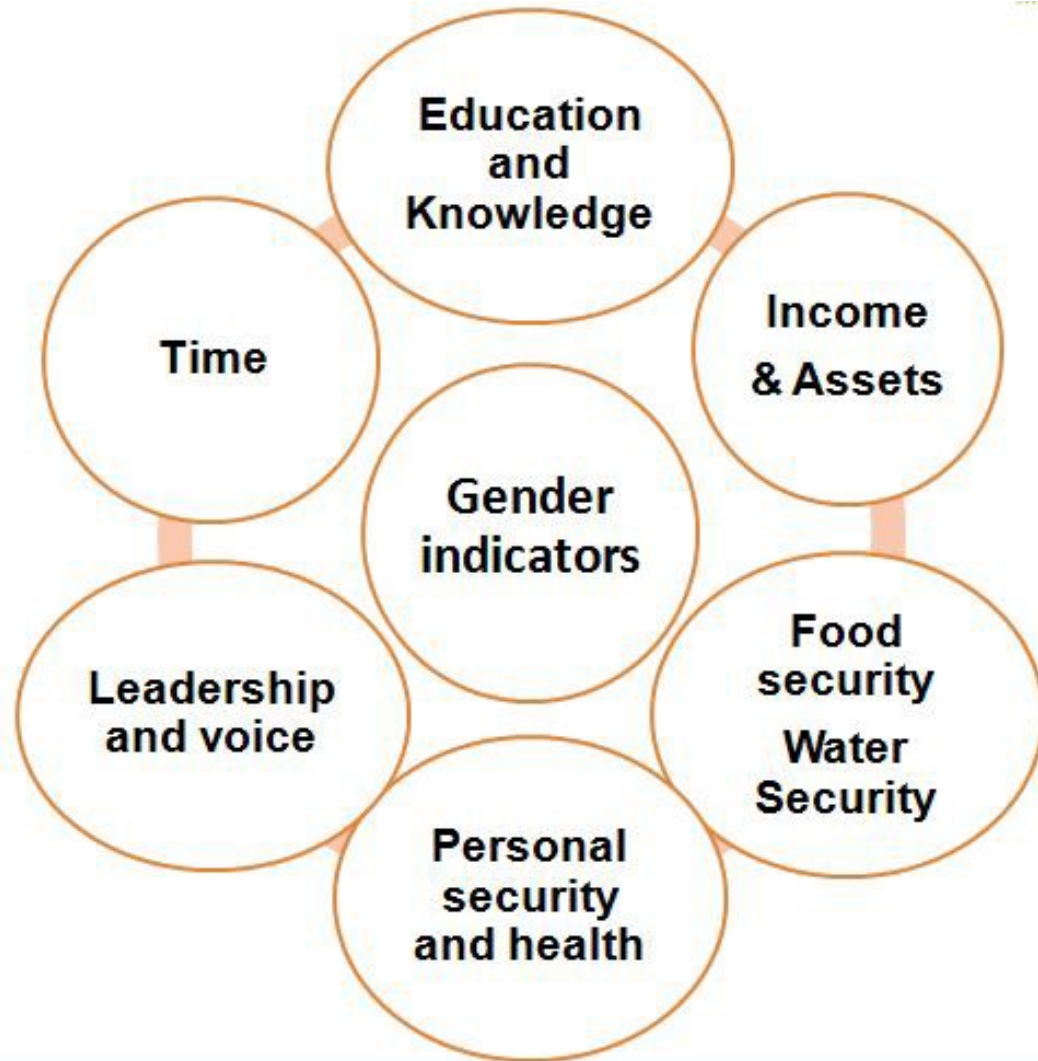
Gender sensitive approaches **recognize people's different needs** leads to more sustainable outcomes for environmental and climate compatible development

3. Monitoring, Learning, Evaluation (MLE)

Proportion of projects that are gender responsive in select countries:



3. Monitoring, Learning, Evaluation (MLE) MFF Indicators of women's empowerment



Monitoring and evaluation of gender outcomes **is vital** to promote gender inequality



MFF Resilience indicators include:

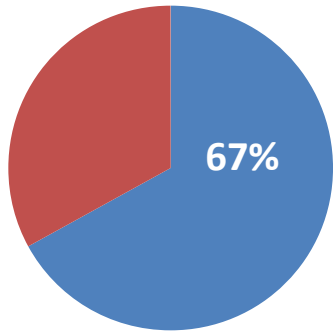
Environmental quality, livelihood and income, water and food security, governance, awareness, education and training and

gender

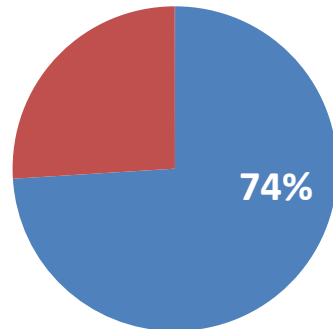
MLE Tool 4 Integrates all

Women's empowerment in SGF projects in Phase 3

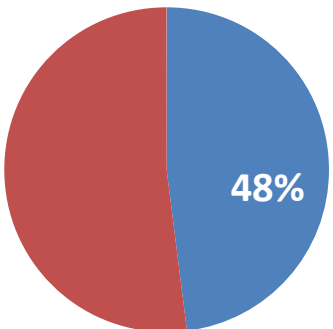
Over 34,000 women beneficiaries in Phase 3



Projects contributing to improving women's income, assets and livelihood



Projects providing education, skills development and awareness to women and their families

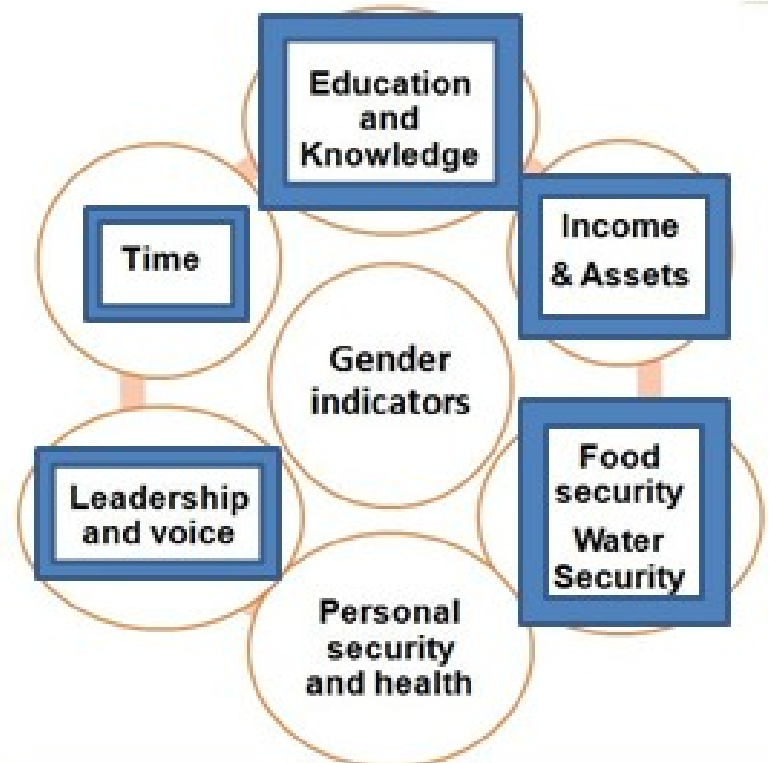


Projects contributing to strengthening women's leadership and voice

Examples:

Ukulhas, Maldives: 30 women earned additional income as well as enhanced their leadership and management skills through innovative farming techniques.

“This best thing about this project is that it’s given all these women a livelihood activity. They’ve now learnt how to do this kind of farming by themselves.” - Member of Ukulhas Island Council

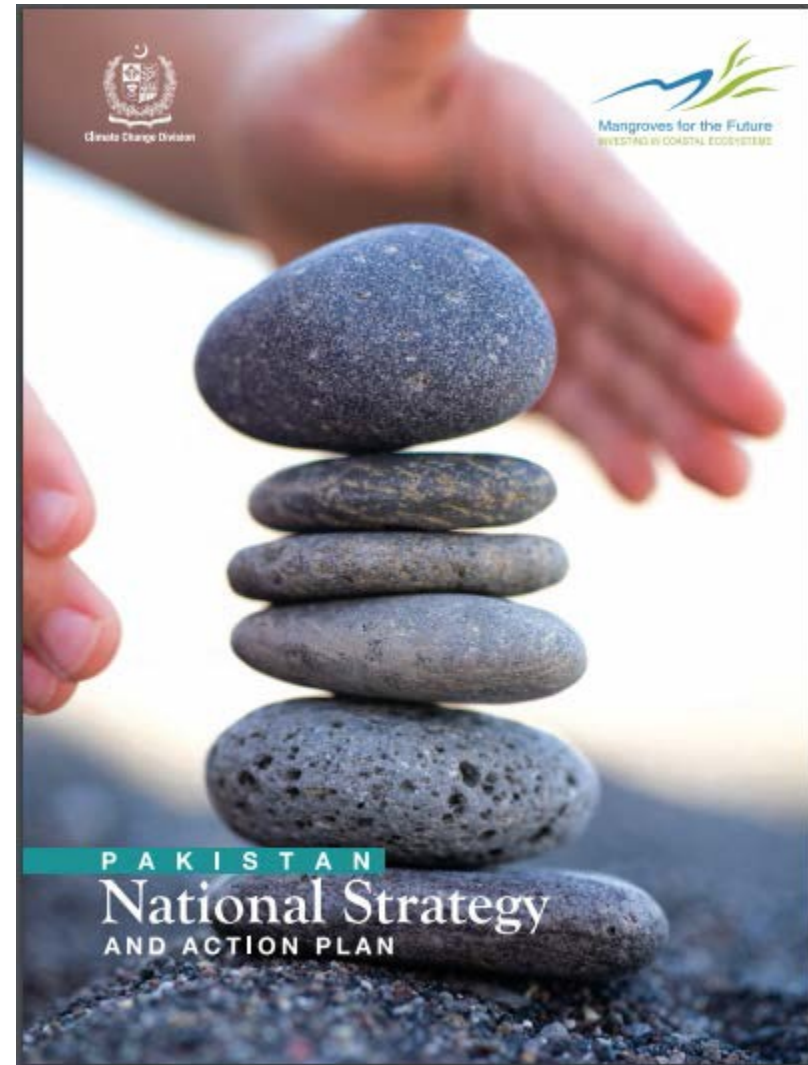


4. National Policy and Strategy



Accomplishments:

- Gender integrated into MFF National Strategies and Action Plans (**NSAPs**) in most countries
- **Gender Focal** persons identified on all NCBs.
- **Review of NCB gender composition** conducted annually. In **2017**; overall number of **women members** over total members is **13%**.



5. Global/ Regional Policy

Participation in and presentation of MFF/ IUCN gender related information at regional/ international conferences



- Swedish Embassy Bangkok Annual Regional Workshop (Sida partners)

Urgency in Action: Understanding Human Behavior and ensuring human rights and gender equality in the response to climate change

- Regional seminar on Ecosystem-based adaptation planning in the context 'Gender equality in climate change and disaster risk management' hosted by ADB in Seoul July 2017

5. Global/ Regional Policy



MFF Regional Gender Study - MFF-SEAFDEC-SEI -

Few studies undertaken that define gender patterns in relation to coastal and marine resources management, empirical studies on the roles of men and women and the implications of women's participation in environmental decision making. (Sida's advice)

Objectives:

1. To improve understanding about the state of women and men in environmental decision making and the structural challenges preventing equitable opportunities for men and women in relation to the participation in coastal and marine, and fisheries sector related activities and decision making.
2. To undertake local-level research examining the gender dimensions of resource use and natural resource management in order to promote and advance gender integrated planning.

The study covers 12 countries:

South East Asian group – Cambodia, Myanmar, Vietnam, Thailand, Indonesia, Malaysia, Philippines;

South Asia group – India, Pakistan, Bangladesh, Maldives, Sri Lanka.

MFF Regional Gender Study

MFF-SEAFDEC-SEI



1. Regional Literature Review

2. **National Policy Analysis** - national policy conditions that support gender equality in environment and natural resource management

3. **Gender Analysis Toolkit for Coastal Communities & Capacity Development**

4. **Site Level Gender Analyses - MFF & SEAFDEC Sites** - local realities and norms influencing men's and women's engagement in on-ground decision making regarding environment and natural resource management.

What is the MFF Gender Analysis Toolkit



A practical guide for coastal and fisheries management practitioners seeking to understand how gender can impact coastal ecosystems resource use and management.

Designed to develop baseline knowledge, to examine gender dimensions related to coastal and natural resources use, livelihoods development and ecosystems management in order to understand gender gaps and to promote and advance gender integrated/ gender responsive planning for improved resilience of coastal ecosystems and the communities that depend on them.

MFF Gender Analysis Toolkit

Provides a set of illustrative research questions to guide data collection for gender analysis in coastal resource dependent communities. Questions are designed to explore information about gender roles and relations within six domains:



6. Capacity Building

- Senior management training in Gender Equality in March 2017, for Sida partners and facilitated by WOCAN.
- MFF Regional Team Meeting and Communications Workshop in July 2017 – Introduction and Review of GA tool with MFF National Coordinators – Learning in particular from the experiences from Pakistan and Bangladesh



1. Internal Governance & Institutional Arrangements

Gender Special Grants



Country	2016	Status	Location	Project Name	2017	Status	Location	Project Name
Bangladesh	Y	Completed	Bangladesh coast.	Understanding the inter-gender relationships in Bangladesh Coastal Zone	Y	Not started.	Nijhum Dwip.	Understanding the gender dynamics to ensure inclusive governance of Nijhum Dwip Seascape
Cambodia	Y	Ongoing.	Toul Tortueng Commune, Sihanouk Province	Gender Assessment of Coastal Ecosystem Management in Toul Tortueng Commune, Prey Nob Distrcit, Preah Sihanouk Province, Cambodia	-	-	-	-
India	Y	Ongoing.	Odisha.	Mainstreaming gender into Small Grant projects in India	Y	Not started.	Krishna Delta, Andhra Pradesh.	Conducting Gender Analysis for MFF priority geographic sites
Indonesia	Y	Not started.	Situbondo and Probolinggo	Development of Gender Sensitive in Situbondo and Probolinggo	Y	Not started.	Situbondo and Proboling go	Gender Assessment for Entrepreneur Development in Situbondo and Probolinggo

1. Internal Governance & Institutional Arrangements

Gender Special Grants



Country	2016	Status	Location	Project Name	2017	Status	Location	Project Name
Maldives	-	-	-	-	Y	Not started yet	S. Hithadhoo	Conduct gender analysis in S. Hithadhoo
Pakistan	Y	Gwatar Bay	Ongoing	Gender Analysis, Gwatar Bay	Y	Not started yet	Keti Bundar	Conducting Gender Analysis for MFF priority geographic sites
Sri Lanka	Y	Ongoing	Kokkilai Lagoon	A Pilot Study in the Kokkilai lagoon area. Development and testing of an up-scalable Gender Assessment tool at the Kokkilai Lagoon in the Northern Province of Sri Lanka	Y	Under Review	Hikkaduwa Marine National Park	Resilience based multi-stakeholder approach for Hikkaduwa Marine National Park
Thailand	-	-	-	-	Y	Start Date to be determined	Trat	Conducting Gender Analysis for MFF priority geographic sites

6. Knowledge Management & Communications (Newsletters, Opinion editorials, Case studies)

- IUCN contribution to **SEI publication** on experience of **gender mainstreaming** in the programme
- **16** gender news stories disseminated in 2017;
- **Gender brochure** published in February 2017;
- OpEd on **International Women's Day** in March 2017



GENDER EQUALITY



Mangroves for the Future (MFF) is a unique partner-led initiative to promote investment in coastal ecosystem conservation for sustainable development



Document Management System (DMS) & MFF website



- Gender page on MFF website: <http://bit.ly/2dR7Tc2>
- Document Management System:
 - Gender in MFF and IUCN
 - MFF Regional Capacity Development
 - Asia MFF Region

Reducing the 'invisible work load' by access to safe drinking water

Location: Kultoli village, Munshiganj, Shyamnagar, Satkhira, Bangladesh. 2nd Jul 2015

An increase in shrimp farming and high levels of salinity in the Chuna River are the prime causes of a scarcity of fresh water for consumption in Kultoli village, Shyamnagar, Bangladesh. Existing freshwater ponds had become shallow and salinity had increased following Cyclone Aila. Women of the village, traditionally tasked with obtaining freshwater for the family, spend two hours of their day walking 3 kilometres to the nearest clean water source.

Fetching daily drinking water from far away ponds is a daily ... , Shyamnagar, Satkhira, Bangladesh © IUCN, 2014

According to [Water.org](#), 180 million people are without access to safe drinking water in South, West and Central Asia. A survey conducted by Water.org from 45 different developing countries shows that women and children have a greater responsibility to collect water in 76% of the households. Millions of children and women in developing countries like Bangladesh spend a big proportion of their days collecting water, and this prohibits them access to crucial life chances. Coupled with poverty, the extra burden of fetching fresh water exacerbates factors like poor health, low educational attainment and a limited skill set.

A small grant project under Mangroves for the Future and implemented by local organization *Nakshikantha Mohila Unnayan Sangstha* tried to address this issue by rehabilitating freshwater sources in Kultoli village, Shyamnagar.

Kultoli village is at the border of the Sundarbans, and part of the people's livelihood is supported by the

Gender equality

Women groups presenting their products made from natural res ... , Thailand © MFF

The involvement, contribution and role of both men and women are important to the functioning and well-being of coastal communities, but often not well understood. Poor understanding of the distinct roles and contributions of men and women often leads to lack of recognition of their distinct needs and interests in policies and programmes. This lack of recognition can result in failure to meet sustainable livelihood goals in ecosystem dependent coastal communities – the target beneficiary group of Mangroves for the Future (MFF).

Mangroves for the Future (MFF) recognizes that gender equality is fundamental to conservation and sustainable development, and has established gender as a cross-cutting or strategic consideration in its programme. MFF activities are designed to ensure that both men and women equally share the benefits achieved from the promotion of sustainable livelihoods and sustainable coastal resource management plans.

Key MFF activities:

- Gender analysis is incorporated as part of the Resilience Assessment (RA). This informs the call for project proposals, the selection of gender responsive projects, project design as well as monitoring and evaluation.
- Established in 2014, the *MFF Strategic Framework and Action Plan for Gender Integration* facilitates the integration of gender equality in the design, planning and execution of activities promoted and supported by MFF. It sets out the MFF principles and approaches and explains how gender integration in MFF will be delivered through the implementation of the MFF Resilience Framework.
- There have been different activities implemented under the MFF related to gender...

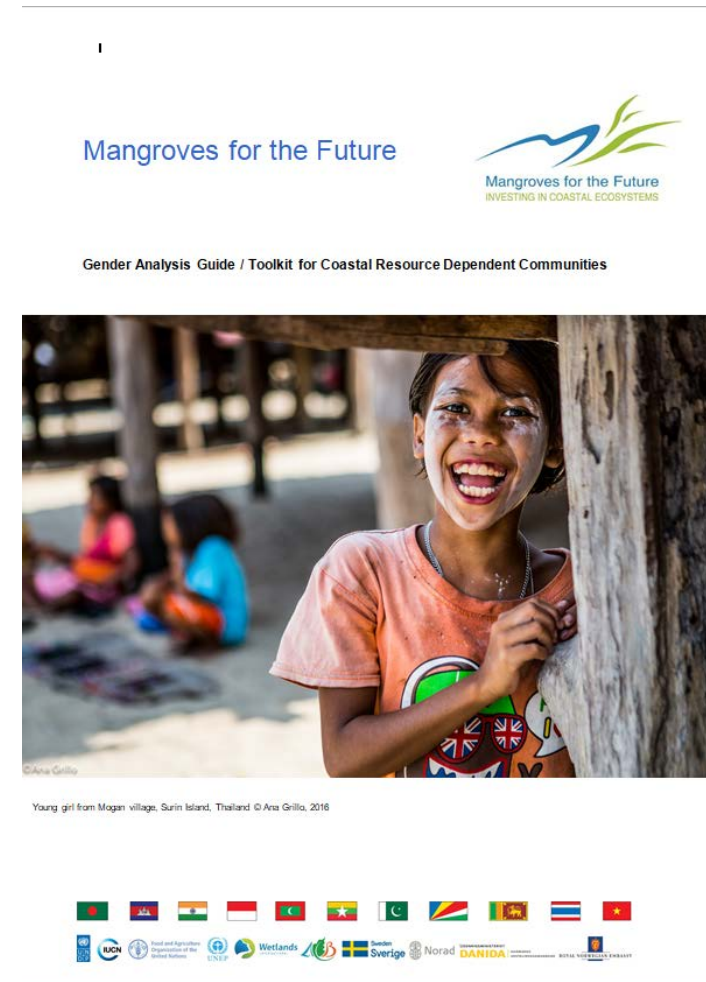
RELATED EVENTS

- **Applying gender integrated planning in the MFF Programme (MFF internal training workshop)**
Asia Region 20 Apr - 24 Apr 2015
As part of its resilience approach to coastal management, MFF strongly focuses on gender responsive project planning. All members of the MFF implementation team are expected to be knowledgeable and skilled in the gender ...
- **Workshop on Gender, Resilience and Conservation**
Dhaka, Bangladesh 23 Oct - 23 Oct 2012
Young development professionals often face challenges while planning development activities including research and field implementation. This includes the ways in which the role of women and men play for coastal resilienc...

RELATED IMAGES

Priorities for Q4 2017 and into 2018

1. Completing **Phase 1** of the **MFF/SEAFDEC/SEI Regional Gender Study**
2. Backstopping all MFF countries to conduct **Gender Analyses in** national geographic priority sites using the GA Toolkit developed for the Regional Gender Study using the USD 5,000 Special Grants for Gender.
3. **NCB** to promote the findings of the national policy analyses, develop strategic relationships with ministries responsible for women's affairs, and ministries responsible for environment, in order to develop projects and promote women and environment policy to reduce gender based inequalities.
4. Documentation of MFF **case studies that highlight gender equality and women's empowerment.**
5. **Regional workshop** highlighting the findings of the Regional Gender Study in partnership with SEAFDEC and SEI and maybe other key organizations.



Thank you!



Maeve.nightingale@iucn.org

Anushae.parakh@iucn.org